

The background of the slide is a light grey gradient with several realistic water droplets of various sizes scattered across it. The droplets have highlights and shadows, giving them a three-dimensional appearance. The text is centered on the page.

TFS

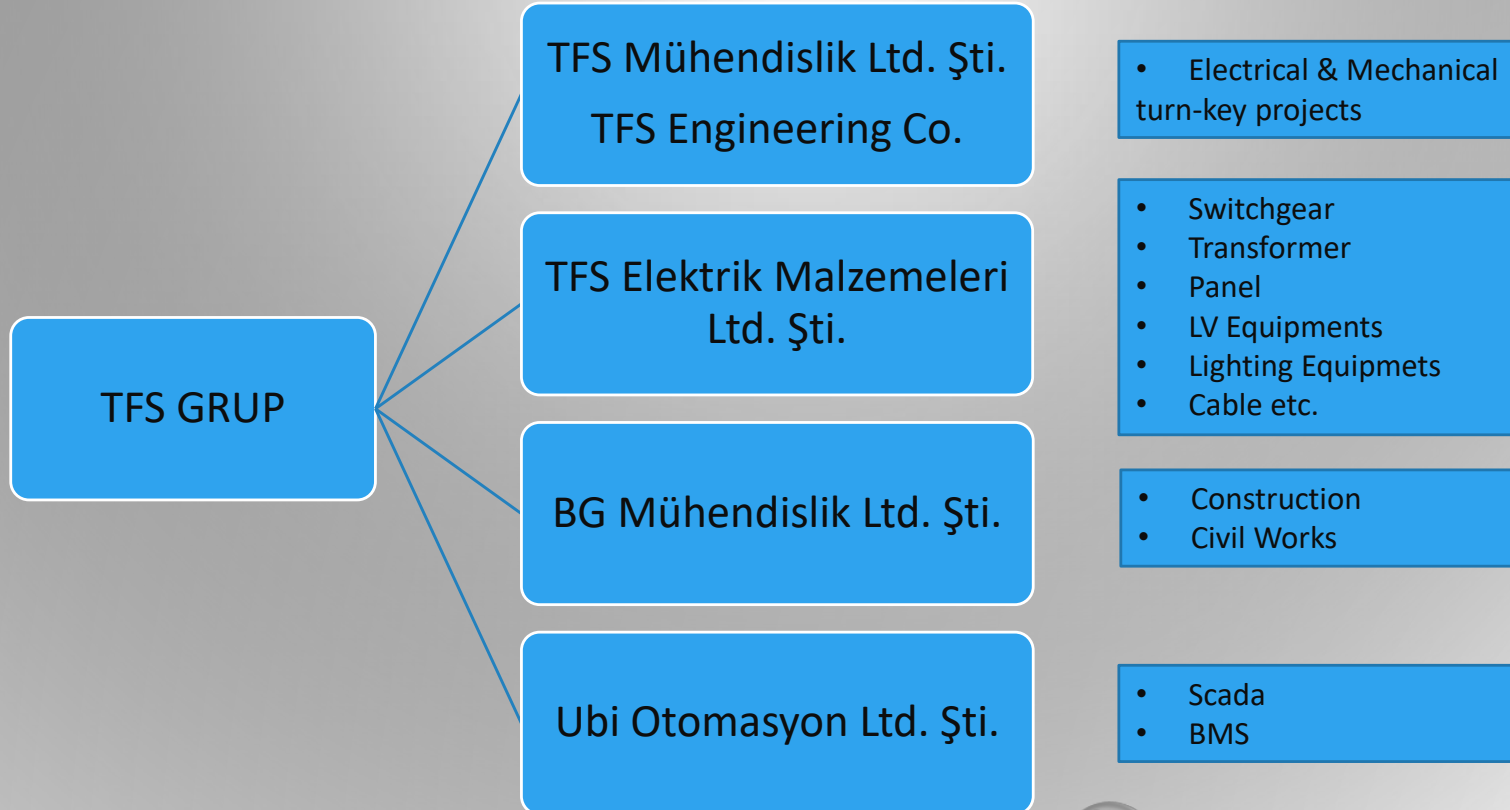
MÜHENDİSLİK

OUR MISSION & VISION

- IN THE CURRENT COMMERCE CONDITION, THE SUCCESS OF INTERNATIONAL AND NATIONAL PROJECTS IS DEPENDENT ON THE COMMITMENT OF EVERY EMPLOYEE IN A COMPANY WITH CONTINUES ACTIVE INVOLVEMENT OF ALL DEPARTMENTS OF THE BUSINESS. WITH THIS IDEOLOGY IN MIND, OUR FIRM WAS FOUNDED WITH AN OBJECTIVE TO BECOME WELL ESTABLISHED IN THE ENGINEERING SECTOR. OUR FIRM WAS ESTABLISHED ON ELECTRIC & ELECTRONIC SEGMENT IN 2008. IN 2012 ,WE STARTED TO WORK ON MECHANICAL AND CIVIL WORKS SCOPES WE GROW UP OUR WORKING AREA.
- OUR FIRM IS ALWAYS KEEN TO TAKE ADVANTAGE OF THE REGIONS NATURAL ENERGY RESOURCES TO SOLVE ENERGY ISSUES, ENERGY PRODUCTION AND DISTRIBUTION. HEATING, AIR CONDITIOING, VENTILATING, SANITARY AND FIRE SYSTEMS ARE THE OTHER SCOPES OF US. TFS ENGINEERING CONSTANTLY THRIVES TO MEET AND EXCEED NATIONAL AND INTERNATIONAL STANDARDS THEREFORE ATTAINING THE TRUST OF OUR CUSTOMERS, INVESTORS AND EMPLOYERS. WITH OUR EXPERIENCED ENGINEERING EXPERTISE AND OUR VITAL SOCIAL THOUGHTS OUR TEAM IS DEDICATED TO SERVE TO THE HIGHEST QUALITY.
- OUR AIM IS ALWAYS TO MEET OUR CUSTOMERS' NEEDS WITH THE RIGHT DESIGNS AND TO FIND THE MOST APPROPRIATE SOLUTIONS WITHOUT COMPROMISING ON QUALITY AND SEEKING TO COMPLETE EVERY PROJECT ON SCHEDULE WITHOUT ANY DEFECTS. OUR FIRM IS DETERMINED TO IMPROVE AND DEVELOP OUR STAFF'S ABILITY AND SKILLS BY INTRODUCING NEW TECHNOLOGY IN ORDER TO ENSURE TO DELIVER THE BEST SERVICE. TOGETHER WITH BASIC VALUE POLICY WE HAVE SET TO BECOME ONE OF THE MOST RECOGNIZED AND TRUSTED COMPANIES WITH THE SECTOR.
- WE BELIEVE WE CAN BECOME ONE OF THE MOST SUCCESSFUL FIRMS BY PROVIDING A SERVICE AT THE HIGHEST QUALITY BUT AT A REASONABLE PRICE LEVEL. SINCE THE FOUNDING OF OUR FIRM IN 2006, THE PROJECTS WHICH HAVE BEEN UNDERTAKEN HAVE BEEN SUCCESSFUL AS WE UNDERSTAND QUALITY WHICH RESULTS IN HIGH CUSTOMER SATISFACTION. AS TFS ENGINEERING, WE WOULD LIKE TO THANK ALL THE COMPANIES WHICH WE HAVE WORKED WITH AND THANK ALL OF OUR EMPLOYEES AND WE ARE LOOKING FORWARD TO MANY YEARS OF SUCCESSFUL PARTNERSHIP.



COMPANY PROFILE



REFERENCE PROJECTS ON WATER SEGMENT

1. YENİKAPI WASTE WATER TREATMENT PROJECT
2. TRNC GAZİMAĞUSA WATER TRANSMISSION LINE PROJECT
3. TRNC PUMP STATIONS PROJECT
4. ŞANLIURFA WATER TREATMENT PLANT 2ND PHASE PROJECT
5. OTHER REFERENCES ON WATER TREATMENT PROJECTS

YENİKAPI WASTE WATER TREATMENT PROJECT

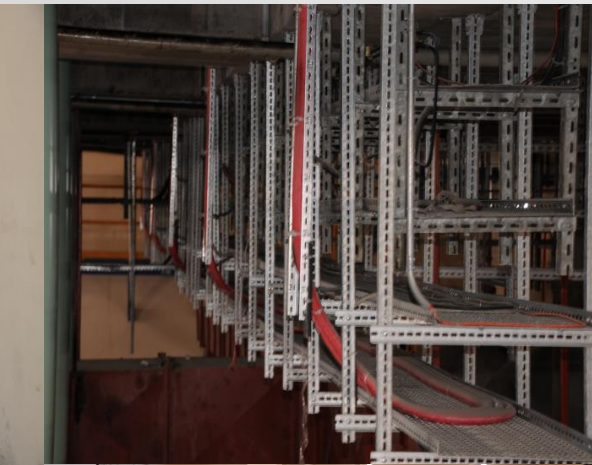
PROJECT INFO

- ELECTROMECHANIC PROJECT VALUE: €5.8MM
- EPC: BİNAŞ İNŞAAT
- EXECUTION: 2016-2017

PROJECT SCOPE

- 4 PIECES MOTOPUMP; EACH 530KW
- 5 PIECES MOTOPUMP; EACH 710KW
- TRANSFORMERS (6KV 12MVA)
- MV SWITCHGEARS
- 4 PIECES SOFT STARTER, 5 PIECES VFD
- SCADA (GE)
- LV ELECTRICAL BOARDS AND EQUIPMENTS (GE)
- MANPOWER, INSTALLATION AND COMMISSIONING

SITE PICTURES OF YENİKAPI PROJECT



SITE PICTURES OF YENİKAPI PROJECT



TRNC GAZİMAĞUSA WATER TRANSMISSION LINE PROJECT

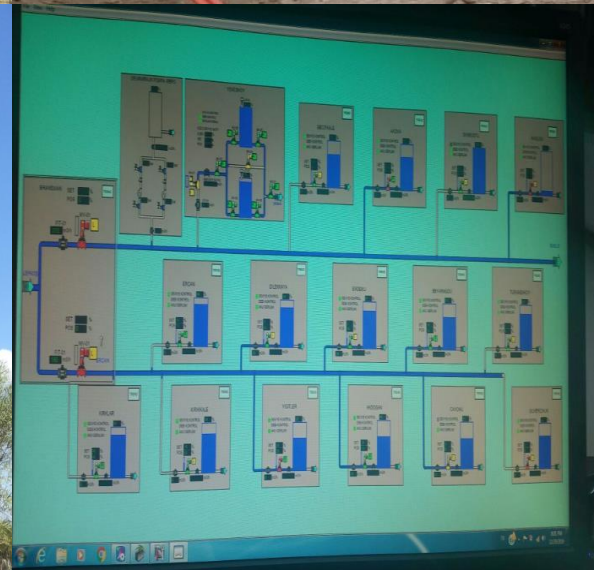
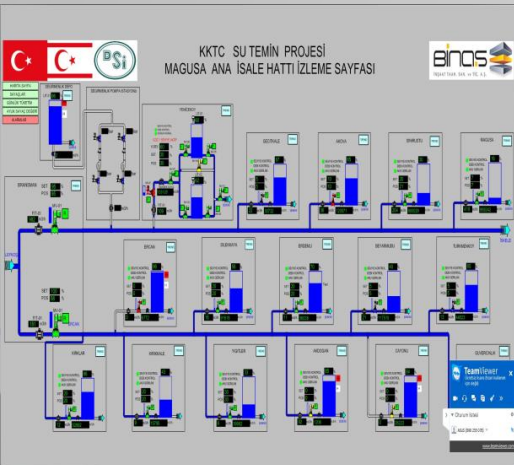
PROJECT INFO

- ELECTROMECHANIC PROJECT VALUE: 3MM TL
- EPC: BİNAŞ İNŞAAT
- EXECUTION: 2015-2016

PROJECT SCOPE

- 164KM FIBEROPTIC INFRASTRUCTURE
- SOLAR SYSTEM (SUPPLY ELECTRICITY TO 18 SUBSTATION)
- SCADA (GE)
- LV ELECTRICAL BOARDS AND EQUIPMENTS (GE)
- MANPOWER, INSTALLATION AND COMMISSIONING

SITE PICTURES OF TRNC GAZİMAĞUSA PROJECT



TRNC PUMP STATIONS PROJECT

PROJECT INFO

- ELECTROMECHANIC PROJECT VALUE: 8MM TL
- EPC: BİNAŞ İNŞAAT
- EXECUTION: 2013-2015

PROJECT SCOPE

- 9 PIECES 1.6MW 3.3 KV MOTOPUMP
- 9 PIECES 1.6MW 3.3 KV VFD
- 4MVA 3.3KV GENERATOR
- TRANSFORMERS (3.3KV 18MVA)
- MV SWITCHGEARS
- LV ELECTRICAL BOARDS AND EQUIPMENTS (GE)
- SCADA
- MANPOWER, INSTALLATION AND COMMISSIONING

SITE PICTURES OF TRNC PUMP STATIONS PROJECT



SITE PICTURES OF TRNC PUMP STATIONS PROJECT



ŞANLIURFA WATER TREATMENT PLANT 2ND PHASE PROJECT

PROJECT INFO

- TURN-KEY PROJECT VALUE: 20MM TL
- EPC: BİNAŞ İNŞAAT
- EXECUTION: 2013-2016

PROJECT SCOPE

- 5 PIECES 820KW 6.3 KV MOTOPUMP
- 5 PIECES 820KW 6.3 KV SOFT STARTER
- 5 PIECES 630KW 690 V MOTOPUMP
- 5 PIECES 630KW 690 V VFD
- MV SWITCHGEARS (GE)
- LV ELECTRICAL BOARDS AND EQUIPMENTS (GE)
- SCADA
- (MANPOWER, INSTALLATION AND COMMISSIONING)

SITE PICTURES ŞANLIURFA WATER TREATMENT PROJECT



OTHER REFERENCES ON WATER TREATMENT PROJECTS

- **AYDIN WATER TRANSMISSION LINE PROJECT**

- ELECTRICAL SCOPE: 2MM TL
- EPC: BİNAŞ İNŞAAT
- EXECUTION: 2011-2012

- **BODRUM WATER TREATMENT PLANT PROJECT**

- ELECTRICAL SCOPE: 1.5 MM TL (2010-2011)
- EPC: BİNAŞ İNŞAAT
- EXECUTION: 2010-2011

- **KARABÜK WATER TREATMENT PLANT PROJECT**

- ELECTRICAL SCOPE: 1.8MM TL
- EPC: MPE MÜHENDİSLİK
- EXECUTION: 2011-2012

SITE PICTURES OF AYDIN, KARABÜK AND BODRUM WATER TREATMENT PROJECTS



REFERENCE PROJECTS ON GRID SEGMENT

1. ŐANLIURFA ŐÖNT KAPASİTÖR BANKLARI VE KÖK BİNA REVİZYONLARI PROJECT
2. ŐANLIURFA EYÜPNEBİ FİDERİ GERİLİM DÖNÜŐÜMÜ VE AYDINLATMA ELEKTRİK TESİSİ YAPIM PROJECT
3. DİYARBAKIR HUZUREVLERİ MAHALLESİ KISMI AG-YG(OG) YERALTI ŐEBEKESİ PROJECT
4. DİYARBAKIR İLİ 1. GRUP YAPIM İŐİ PROJECT

ŞANLIURFA ŞÖNT KAPASİTÖR BANKLARI VE KÖK BİNA REVİZYONLARI PROJECT

PROJECT INFO

- TURN-KEY PROJECT VALUE: 2.8MM TL
- EPC: DİCLE ELEKTRİK DAĞITIM A.Ş.
- EXECUTION: 2014-2014

PROJECT SCOPE

- MV SWITCHGEARS
- MV TRANSFORMERS
- MV CABLING
- MV ELECTRICAL BOARDS
- MANPOWER, INSTALLATION AND COMMISSIONING

SITE PICTURES OF ŞANLIURFA ŞÖNT KAPASİTÖR BANKLARI VE KÖK BİNA REVİZYONLARI PROJECT



ŞANLIURFA EYÜPNEBİ FİDERİ GERİLİM DÖNÜŞÜMÜ VE AYDINLATMA ELEKTRİK TESİSİ YAPIM PROJESİ

PROJESİNİN BİLGİLERİ

- TURN-KEY PROJESİNİN DEĞERİ: 3.3 MM TL
- EPC: DİCLE ELEKTRİK DAĞITIM A.Ş.
- YERİNERE: 2016-2016

PROJESİNİN KAPSAMI

- MV SWITÇLERİ
- MV TRANSFORMERLERİ
- MV KABLOLARI
- MV ELEKTRİK TAHTALARI
- SOKAK AYDINLATMASI
- İNŞAAT, YERİNERE VE KOMİSYON

SITE PICTURES OF ŞANLIURFA EYÜPNEBİ FİDERİ GERİLİM DÖNÜŞÜMÜ VE AYDINLATMA ELEKTRİK TESİSİ YAPIM PROJESİ



DİYARBAKIR HUZUREVLERİ MAHALLESİ KISMI AG-YG(OG) YERALTI ŞEBEKESİ PROJECT

PROJECT INFO

- TURN-KEY PROJECT VALUE: 4.8 MM TL
- EPC: DİCLE ELEKTRİK DAĞITIM A.Ş.
- EXECUTION: 2016-2016

PROJECT SCOPE

- MV SWITCHGEARS
- MV TRANSFORMERS
- MV CABLING
- MV ELECTRICAL BOARDS
- STREET LIGHTING
- MANPOWER, INSTALLATION AND COMMISSIONING

SITE PICTURES OF DİYARBAKIR HUZUREVLERİ MAHALLESİ KISMI AG-YG(OG) YERALTI ŞEBEKESİ PROJİ



DİYARBAKIR İLİ 1. GRUP YAPIM İŞİ PROJECT

PROJECT INFO

- TURN-KEY PROJECT VALUE: 6.4 MM TL
- EPC: DİCLE ELEKTRİK DAĞITIM A.Ş.
- EXECUTION: 2016-ONGOING

PROJECT SCOPE

- MV SWITCHGEARS
- MV TRANSFORMERS
- MV CABLING
- MV ELECTRICAL BOARDS
- STREET LIGHTING
- MANPOWER, INSTALLATION AND COMMISSIONING

SITE PICTURES OF DİYARBAKIR İLİ 1. GRUP YAPIM İŞİ PROJECT



REFERENCE PROJECTS ON FACTORY SEGMENT

1. MODERN AMBALAJ PM5 PAPER FACTORY PROJECT
2. OTHER REFERENCES ON FACTORY SEGMENT

MODERN AMBALAJ PM5 PAPER FACTORY PROJECT

PROJECT INFO

- ELECTRICAL PROJECT VALUE: 580.000 TL
- EPC: EREN HOLDING
- EXECUTION: 2014-2014

PROJECT SCOPE

- MV SWITCHGEARS
- TRANSFORMERS
- LV ELECTRICAL BOARDS AND EQUIPMENTS (GE)
- LIGHTING SYSTEM
- (MANPOWER, INSTALLATION AND COMMISSIONING

SITE PICTURES OF MODERN AMBALAJ PM5 PAPER FACTORY PROJECT



OTHER REFERENCES ON FACTORY SEGMENT

- ÜLKER TOPKAPI FACTORY
 - ELECTRICAL SCOPE: 500.000 TL
 - EPC: ÜLKER ÇİKOLATA
 - EXECUTION: 2016-ONGOING
- PROJECT SCOPE
 - ELECTRICAL INFRASTRUCTURE
 - LIGHTING FIXTURES (GE)
 - LIGHTING AUTOMATION (GE)
 - ELECTRICAL BOARD & EQUIPMENTS (GE)
 - MANPOWER, INSTALLATION AND COMMISSIONING
- ASSAN ALİMİNYUM DİLOVASI FACTORY
 - ELECTRICAL SCOPE: 400.000 TL
 - EPC: KİBAR HOLDİNG
 - EXECUTION: 2017-ONGOING
- PROJECT SCOPE
 - ELECTRICAL INFRASTRUCTURE
 - LIGHTING FIXTURES (GE)
 - LIGHTING AUTOMATION (GE)
 - ELECTRICAL BOARD & EQUIPMENTS (GE)
 - MANPOWER, INSTALLATION AND COMMISSIONING

SITE PICTURES OF ÜLKER AND ASSAN FACTORY PROJECTS



REFERENCE PROJECTS ON SHOPPING MALL SEGMENT

1. MULTI SHOPPING MALL PROJECT
2. CITY CENTER SHOPPING MALL PROJECT

MULTI SHOPPING MALL PROJECT

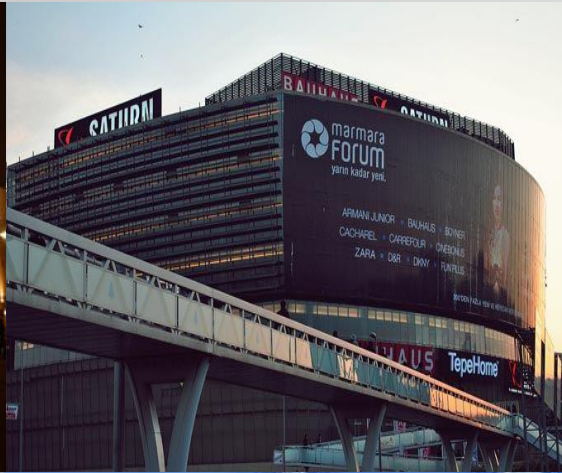
PROJECT INFO

- PROJECT VALUE: 1.4MM TL
- EPC: GENERAL ELECTRIC TÜRK LİMİTED
- EXECUTION: 2016-2017

PROJECT SCOPE

- LED TRANSFORMATION OF BAYRAMPAŞA & MARMARA FORUM AVM
- LED TRANSFORMATION OF GORDION & ANKARA FORUM AVM
- LED TRANSFORMATION OF TRABZON & GAZİANTEP FORUM AVM
- LED TRANSFORMATION OF ERZURUM, AYDIN, MANİSA, DENİZLİ & NEVŞEHİR FORUM AVM
- MANPOWER & INSTALLATION

PICTURES OF MULTI SHOPPING MALL PROJECT



CITY CENTER SHOPPING MALL PROJECT

PROJECT INFO

- ELECTRICAL PROJECT VALUE: 10.5MM TL
- EPC: ÖZYURT A.Ş.
- EXECUTION: 2016-ONGOING

PROJECT SCOPE

- MV SWITCHGEAR
- TRANSFORMERS
- LV ELECTRICAL BOARDS & EQUIPMENTS (GE)
- LIGHTING AUTOMATION (GE)
- ELECTRICAL INFRASTRUCTURE
- MANPOWER, INSTALLATION AND COMMISSIONING

SITE PICTURES OF CITY CENTER SHOPPING MALL PROJECT



REFERENCE PROJECTS ON HOTEL SEGMENT

1. DJANET HOTEL PROJECT
2. CONSTANTINE HOTEL PROJECT
3. ADRAR TUAT HOTEL PROJECT

DJANET HOTEL PROJECT (ALGERIA)

PROJECT INFO

- ELECTRICAL PROJECT VALUE: 2MM \$
- EPC: KAYI HOLDİNG
- EXECUTION: 2016-ONGOING

PROJECT SCOPE

- MV SWITCHGEAR
- TRANSFORMERS
- LV ELECTRICAL BOARDS & EQUIPMENTS (GE)
- ELECTRICAL INFRASTRUCTURE
- MANPOWER, INSTALLATION AND COMMISSIONING

SITE PICTURES OF DJANET HOTEL PROJECT



CONSTANTINE HOTEL PROJECT (ALGERIA)

PROJECT INFO

- ELECTRICAL PROJECT VALUE: 3MM \$
- EPC: KAYI HOLDİNG
- EXECUTION: 2015-2016

PROJECT SCOPE

- MV SWITCHGEAR
- TRANSFORMERS
- LV ELECTRICAL BOARDS & EQUIPMENTS (GE)
- LIGHTING AUTOMATION SYSTEM (GE)
- ELECTRICAL INFRASTRUCTURE
- MANPOWER, INSTALLATION AND COMMISSIONING

SITE PICTURES OF CONSTANTINE HOTEL PROJECT



27 Ağu 2016

ADRAR TUAT HOTEL PROJECT (ALGERIA)

PROJECT INFO

- ELECTRICAL PROJECT VALUE: 600.000 \$
- EPC: MDB INŞAAT
- EXECUTION: 2017-ONGOING

PROJECT SCOPE

- LV ELECTRICAL BOARDS & EQUIPMENTS (GE)
- LIGHTING AUTOMATION SYSTEM (GE)
- ELECTRICAL INFRASTRUCTURE
- MANPOWER, INSTALLATION AND COMMISSIONING

SITE PICTURES OF ADRAR TUAT HOTEL PROJECT



REFERENCE PROJECTS ON HOSPITAL SEGMENT

1. MUSUL UNIVERSITY HOSPITAL PROJECT
2. PIRMAM HOSPITAL PROJECT
3. SORAN HOSPITAL PROJECT

MUSUL UNIVERSITY HOSPITAL PROJECT (IRAQ)

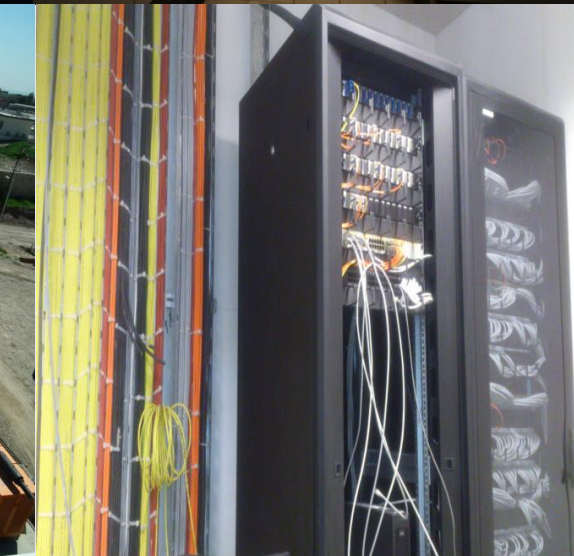
PROJECT INFO

- ELECTRICAL PROJECT VALUE: 2.1MM \$
- EPC: TEK-İMAŞ CO
- EXECUTION: 2011-2013

PROJECT SCOPE

- MV SWITCHGEARS
- TRANSFORMERS
- LV ELECTRICAL BOARDS & EQUIPMENTS (GE)
- ELECTRICAL INFRASTRUCTURE
- MANPOWER, INSTALLATION AND COMMISSIONING

SITE PICTURES OF MUSUL UNIVERSITY HOSPITAL PROJECT



PIRMAM HOSPITAL PROJECT (IRAQ)

PROJECT INFO

- ELECTRICAL PROJECT VALUE: 250.000 \$
- EPC: BC GROUP
- EXECUTION: 2009-2010

PROJECT SCOPE

- MV SWITCHGEARS
- TRANSFORMERS
- ELECTRICAL INFRASTRUCTURE
- MANPOWER, INSTALLATION AND COMMISSIONING

SITE PICTURES OF PIRMAM HOSPITAL PROJECT

SALAHADDIN HASTANESI



SORAN HOSPITAL PROJECT (IRAQ)

PROJECT INFO

- ELECTRICAL PROJECT VALUE: 650.000 \$
- EPC: BC GROUP
- EXECUTION: 2010-2012

PROJECT SCOPE

- MV SWITCHGEARS
- TRANSFORMERS
- ELECTRICAL INFRASTRUCTURE
- MANPOWER, INSTALLATION AND COMMISSIONING

SITE PICTURES OF SORAN HOSPITAL PROJECT

SORAN HASTANESI



OTHER REFERENCE PROJECTS

1. ORAN MOSQUE PROJECT
2. SHAKLAWA KDP BUILDING PROJECT
3. AVCILAR BEYLİKDÜZÜ METROBUS PROJECT
4. EMPIRE TOWER & WINGS PROJECT
5. GENERAL MOTOR COMPANY SHOWROOM PROJECT

ORAN MOSQUE PROJECT (ALGERIA)

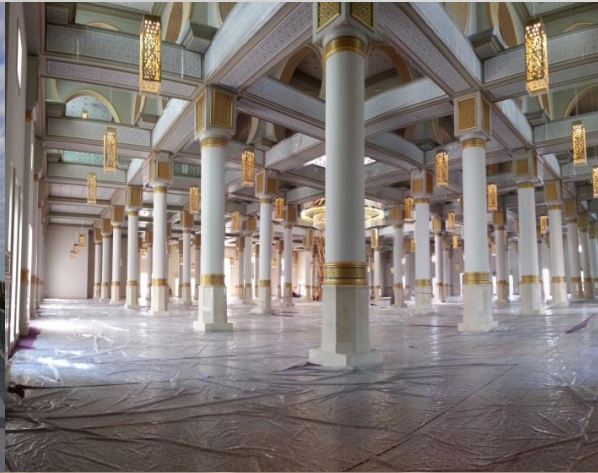
PROJECT INFO

- ELECTRICAL PROJECT VALUE: 1.3MM \$
- EPC: KAYI HOLDING
- EXECUTION: 2014-2015

PROJECT SCOPE

- MV SWITCHGEARS
- TRANSFORMERS
- GENERATORS
- LV ELECTRICAL BOARDS AND EQUIPMENTS (GE)
- LIGHTING AUTOMATION SYSTEM (GE)
- ELECTRICAL INFRASTRUCTURE
- MANPOWER, INSTALLATION AND COMMISSIONING

SITE PICTURES OF ORAN MOSQUE PROJECT (ALGERIA)



SHAKLAWA KDP BUILDING PROJECT (IRAQ)

PROJECT INFO

- ELECTRICAL PROJECT VALUE: 1.1MM \$
- EPC: TEK İMAŞ CO.
- EXECUTION: 2014-2015

PROJECT SCOPE

- MV SWITCHGEARS
- TRANSFORMERS
- LV ELECTRICAL BOARDS AND EQUIPMENTS
- ELECTRICAL INFRASTRUCTURE
- MANPOWER, INSTALLATION AND COMMISSIONING

SITE PICTURES OF SHAKLAWA KDP BUILDING PROJECT



AVCILAR BEYLİKDÜZÜ METROBUS PROJECT

PROJECT INFO

- ELECTRICAL PROJECT VALUE: 13MM TL
- EPC: NAS & ÖZYURT İNŞAAT.
- EXECUTION: 2011-2012

PROJECT SCOPE

- STREET LIGHTING
- SIGNALIZATION/FIBEROPTIC INFRASTRUCTURE
- ELECTRICAL INFRASTRUCTURE
- MANPOWER, INSTALLATION AND COMMISSIONING

PICTURES OF AVCILAR BEYLİKDÜZÜ METROBUS PROJECT



EMPIRE TOWER & WINGS PROJECT

PROJECT INFO

- ELECTRICAL PROJECT VALUE: 17MM \$
- EPC: BC GROUP
- EXECUTION: 2013- ONGOING

PROJECT SCOPE

- MV SWITCHGEARS
- TRANSFORMERS
- GENERATORS
- LV ELECTRICAL BOARDS AND EQUIPMENTS (GE)
- ELECTRICAL INFRASTRUCTURE
- MANPOWER, INSTALLATION AND COMMISSIONING

PICTURES OF EMPIRE TOWER & WINGS PROJECT



GENERAL MOTOR COMPANY SHOWROOM PROJECT (IRAQ)

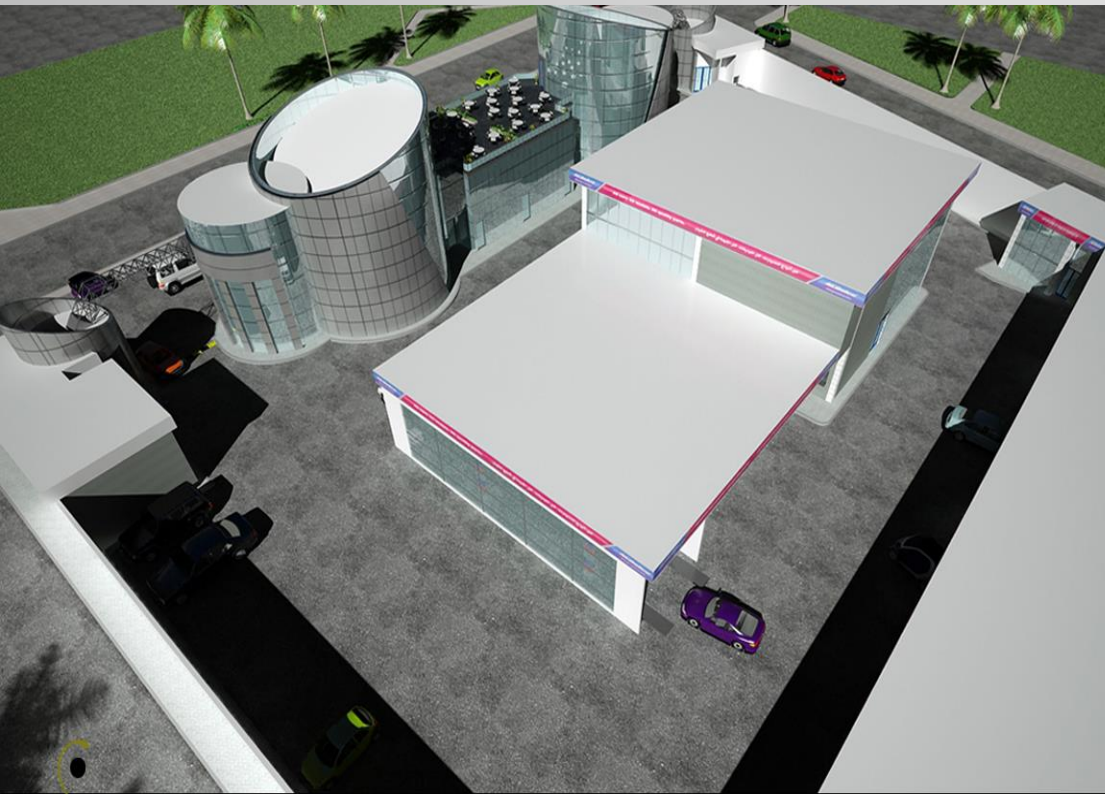
PROJECT INFO

- ELECTRICAL PROJECT VALUE: 700.000 \$
- EPC: BC GROUP
- EXECUTION: 2010-2010

PROJECT SCOPE

- MV SWITCHGEARS
- TRANSFORMERS
- GENERATORS
- LV ELECTRICAL BOARDS AND EQUIPMENTS (GE)
- LIGHTING FIXTURES (GE)
- ELECTRICAL INFRASTRUCTURE
- MANPOWER, INSTALLATION AND COMMISSIONING

PICTURES OF GENERAL MOTOR COMPANY SHOWROOM PROJECT



THANK YOU...

